



Quick Start Guide

ETL4ALL 3.0 - Community Edition

IKAN Software NV
Schaliënhoevedreef 20A
B-2800 Mechelen
BELGIUM

Information in this document, including URL and other Internet Web site references, is subject to change without notice and is provided for informational purposes only. The user assumes all risk with respect to use of the software and accompanying documentation. IKAN Software makes no warranties, express or implied, as to suitability of the software for any particular purpose. Unless otherwise noted, the example companies, organizations, products, domain names, e-mail addresses, logos, people, places and events depicted herein are fictitious, and no association with any real company, organization, product, domain name, e-mail address, logo, person, places or events is intended or should be inferred. Complying with all applicable copyright laws is the responsibility of the user. Without limiting the rights under copyright, no part of this document may be reproduced, stored in or introduced into a retrieval system, or transmitted in any form or by any means (electronic, mechanical, photocopying, recording, or otherwise), or for any purpose, without the express written permission of IKAN Software. IKAN Software may have patents, patent applications, trademarks, copyrights, or other intellectual property rights covering subject matter in this document. Except as expressly provided in any written license agreement from IKAN Software, the furnishing of this document does not give you any license to these patents, trademarks, copyrights, or other intellectual property.

Copyright © 2005 IKAN Software. All rights reserved.

The names of actual companies and products mentioned herein may be the trademarks of their respective owners.

ETL4ALL is a trademark of IKAN Software N.V.

Table of contents

ABOUT THIS MANUAL.....	4
INSTALLING ETL4ALL 3.0.....	5
COPYING THE ETL4ALL LICENSE FILE	9
STARTING ETL4ALL	10
WORKING WITH THE PREDEFINED DEMO PROJECT.....	11
▶ Opening the DEMO Project	12
▶ Displaying the Data Sources	13
▶ Displaying the Procedures.....	15
▶ Displaying the Program.....	16
▶ Displaying the Results.....	17

About this manual

This manual is the *Quick Start Guide* for the of *ETL4ALL version 3.0 - Community Edition* (referred to as *ETL4ALL* in the rest of this document). It is intended for all users who downloaded the product from the Web site *etl4all.com*.

This manual provides information about:

- Installing ETL4ALL (page 5)
- Copying the ETL4ALL license file (page 9)
- Starting ETL4ALL (page 9)
- Working with the DEMO Project

Note This document is **not** the detailed ETL4ALL User Guide. The complete ETL4ALL User Guide describes **all** ETL4ALL functionality. It becomes available after installation. Page references included in this Quick Start Guide refer to the ETL4ALL User Guide.

Installing ETL4ALL 3.0

ETL4ALL is extremely simple to install. Follow the guidelines in this chapter and you will be up and running in about 15 minutes.

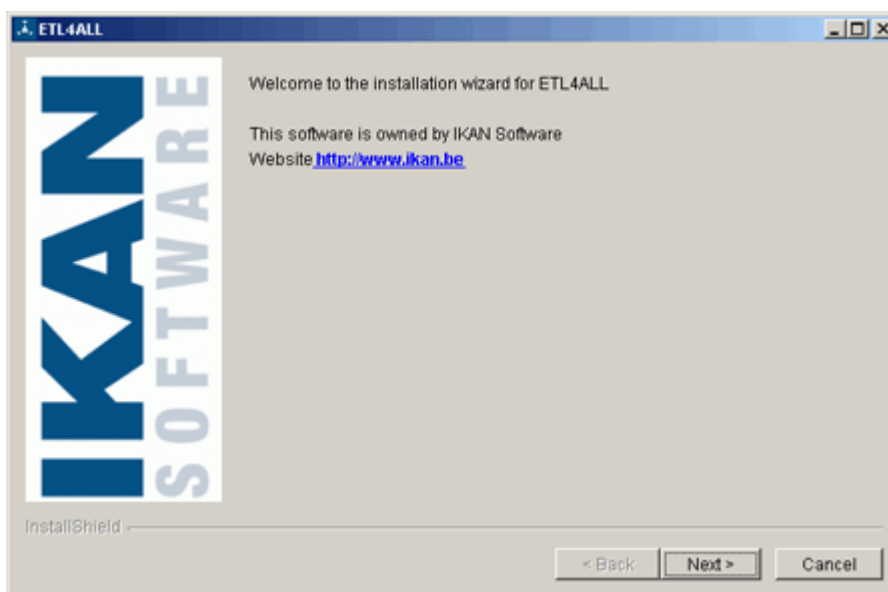
Note *ETL4ALL* version 3.0 - *Community Edition* **cannot** be installed on the Linux platforms. *ETL4ALL* version 3.0 - *Community Edition* can be installed on the following Windows platforms: Windows XP Professional (SP2+), Windows XP Home (SP1+), Windows 2000 Professional (SP3+), Windows 98 (1st & 2nd Editions), Windows NT 4.0 (SP6a), Windows ME, Windows Server 2003 (Web Edition), Windows Server 2003 (Standard Edition), Windows Server 2003 (Enterprise Edition), Windows Server 2003 (Datacenter Edition), Windows 2000 Server.

Perform the following steps to install ETL4ALL on a supported Windows platform. This procedure assumes that you have already downloaded the file *etl4all.exe* and that you have received an e-mail containing this Quick Start Guide and a valid license file.

1. Double-click the file *etl4all.exe*.

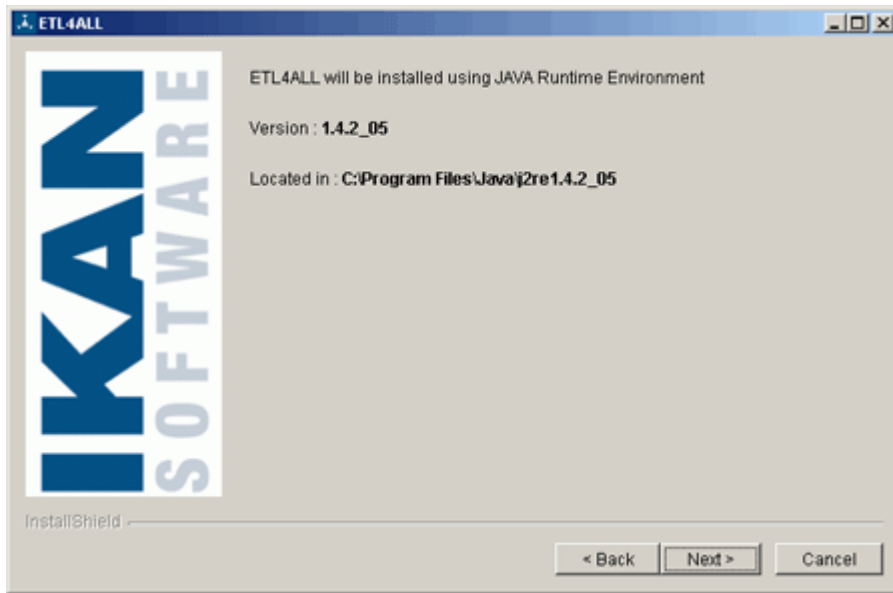
This is the file you downloaded from the *etl4all.com* Web site.

The following screen is displayed:



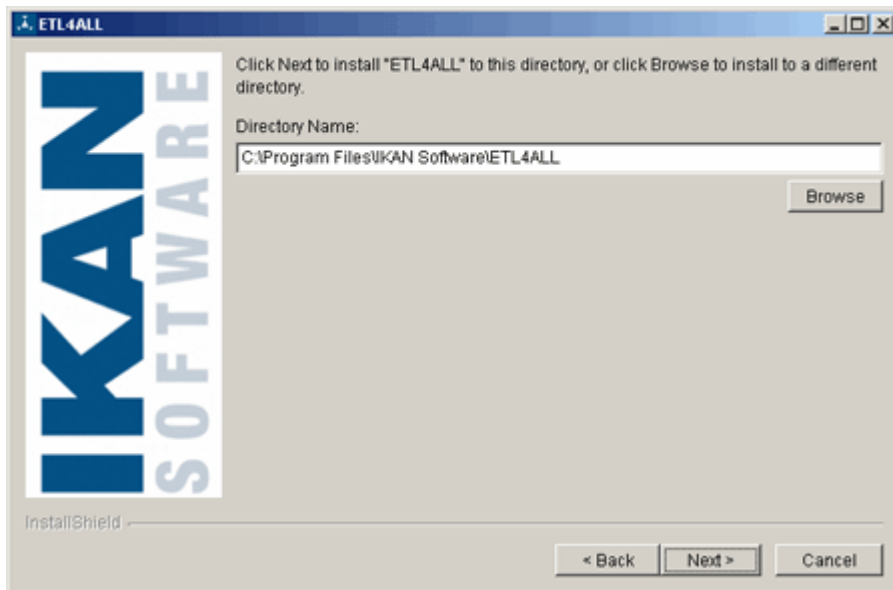
2. Click *Next* >.

The following screen is displayed:



3. Click *Next >*.

The following screen is displayed:



The install wizard suggests the standard install location for ETL4ALL.

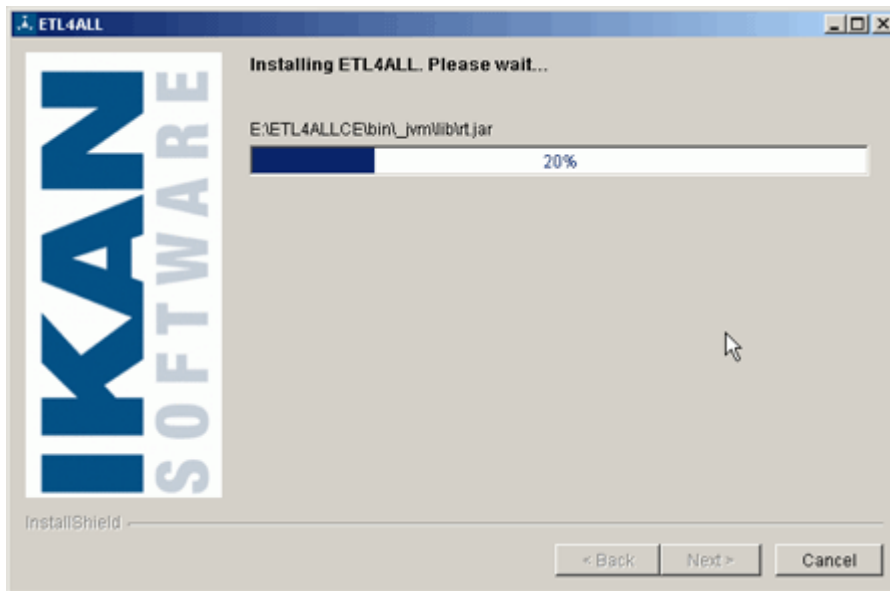
4. **Change the location, if required. Then click *Next >*.**

The following screen is displayed:



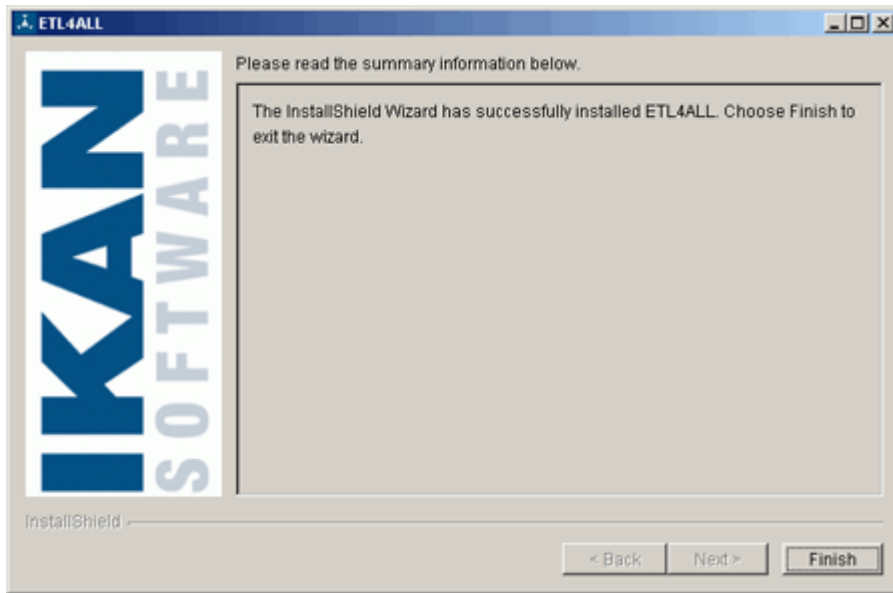
5. Verify the information and click *Next*.

The following screen is displayed:



The application is installed.

Once the installation is complete, the following screen is displayed:



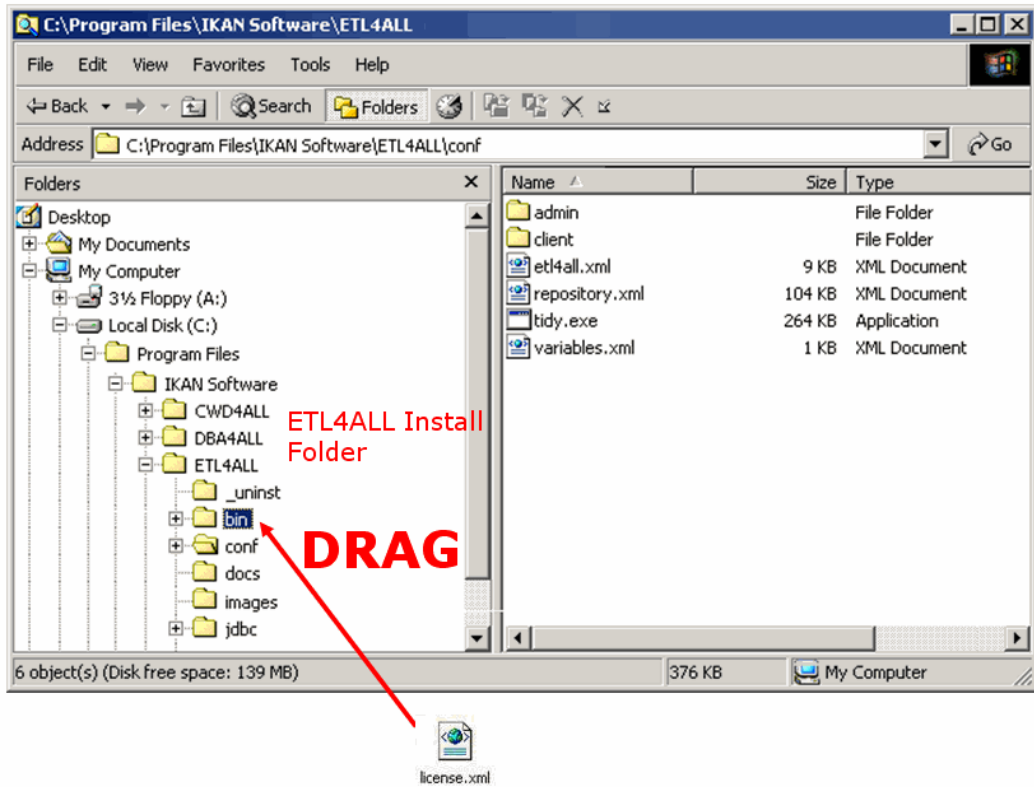
6. Click *Finish*.

Copying the ETL4ALL License file

1. Open the e-mail message you received from IKAN Software after downloading ETL4ALL.

The license file is sent as a *txt* file, because some mail servers exclude xml files.

2. Copy the license file to your local system and rename it to: *license.xml*.
3. Drag the license file to the *bin* folder in the ETL4ALL install Folder, as indicated on the figure below:

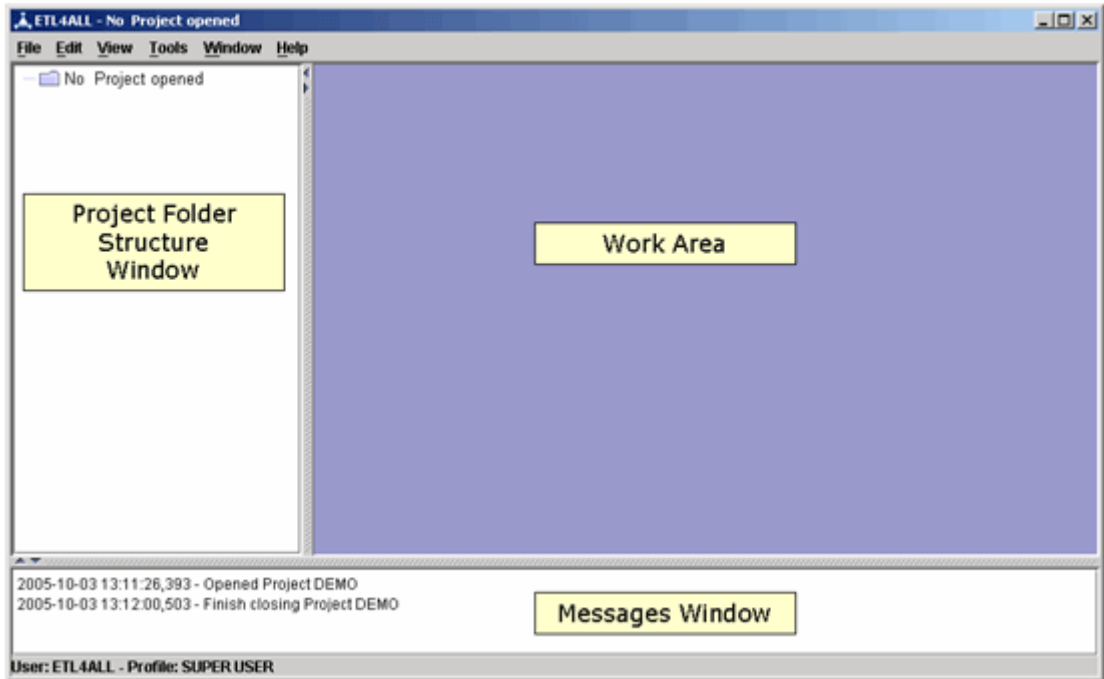


4. Now you can start the application.

Starting ETL4ALL

- Select *Programs / IKAN Software / ETL4ALL / ETL4ALL*.

The ETL4ALL Opening screen will be displayed:



You can now open the pre-defined DEMO Project to get acquainted with ETL4ALL.

Working with the predefined DEMO Project

The purpose of the pre-defined DEMO Project is to show you how data coming from different sources can easily be combined in a report.

The three data sources are:

- a Database Table (with personnel data)
- a Telephone invoice in XML format, delivered by Provider 1
- a Telephone invoice in Excel format, delivered by Provider 2

The resulting report contains the combined telephone budget per employee.

The screenshot displays three data source windows on the left and a combined report window on the right. Red lines indicate the flow of data from the source windows into the report.

Data PERSONNEL

NAME	NUMBER	DEPARTMENT
Fax	12	General Services
Jansen	44	HR
Peters	45	HR
Dupont	54	Sales
Dubois	56	Sales
Martens	63	IT

Data provider 1.xml

Date	Caller	Callee	Cost	Duration
01/01/2004	45	016323232	4.50	320
01/01/2004	54	003316923232	14.13	1420
02/01/2004	44	015558832	12.01	34
02/01/2004	63	011953245	3.23	54
03/01/2004	12	016323232	5.12	16
03/01/2004	56	003316923232	9.21	16
04/01/2004	45	050568741	7.54	67

Data provider 2.xls

Date	Caller	Callee	Cost	Duration
7/1/2004	45	16323232	8.5	820
7/1/2004	54	3316923232	4.13	120
8/1/2004	44	15558832	10.01	33
8/1/2004	63	11953245	6.23	92
9/1/2004	12	16323239	7.12	19
9/1/2004	56	3316923232	12.21	65
10/1/2004	45	59568741	7.84	76
10/1/2004	54	89369412	7.59	54

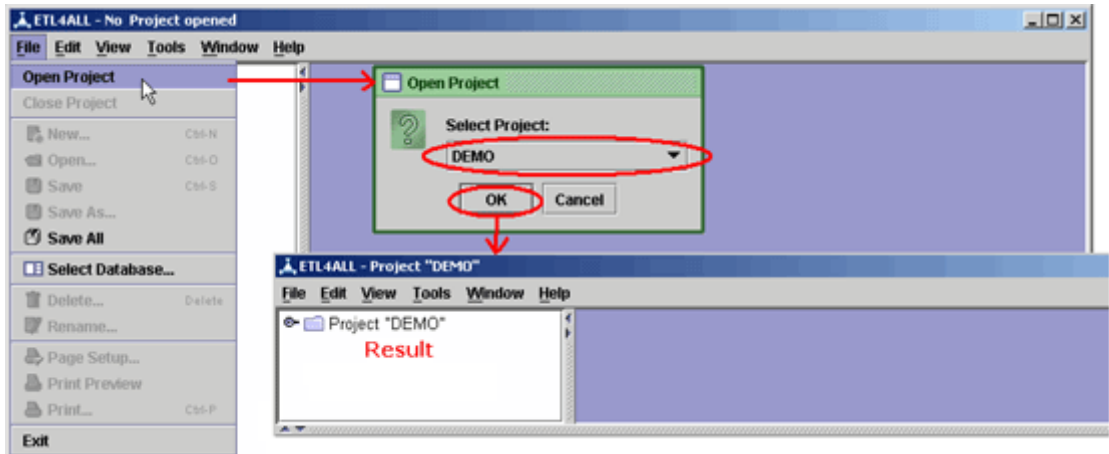
Data Telephony budget per employee

Name	Department	Money
Fax	General Services	752.02
Martens	IT	204.2
Peters	HR	95.65
Jansen	HR	74.6
Dupont	Sales	68.6
Dubois	Sales	58.05

► **To open the DEMO Project**

- **Select *Open Project* from the *File* menu and select *DEMO* from the drop-down menu. Then click **OK**.**

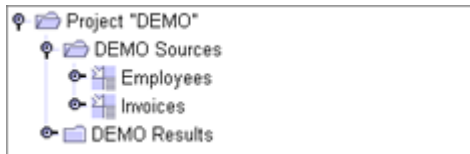
The Main Folder for the DEMO Project is displayed in the Project Folder Structure window:



For information on how to create your own Projects, refer to the ETL4ALL User Guide, page 165.

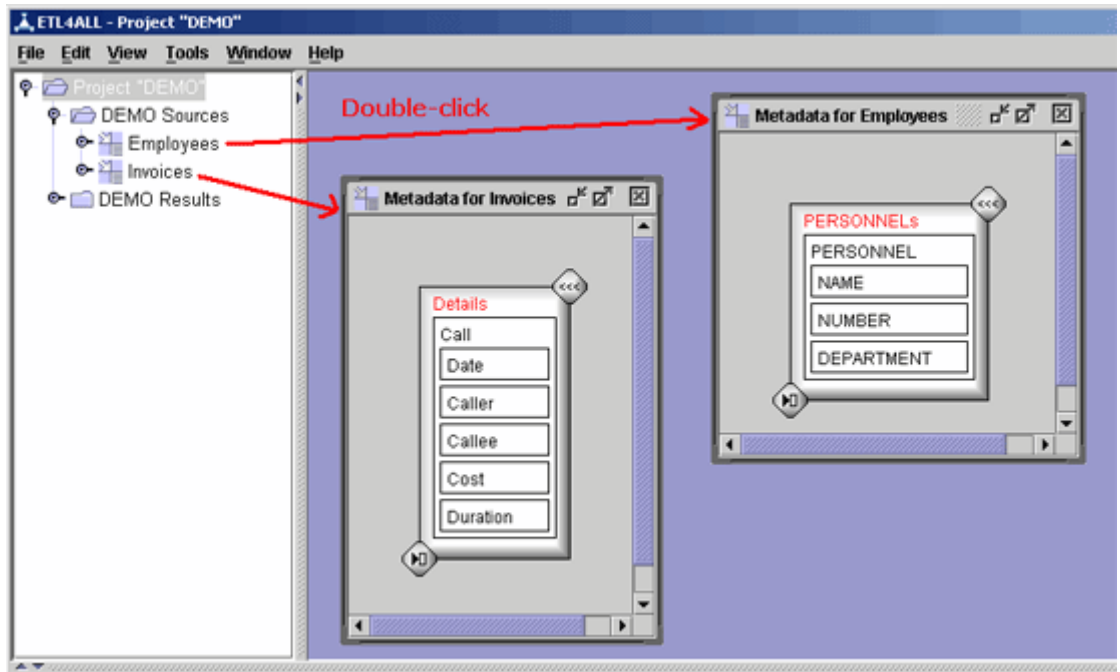
► To display the Data Sources

1. Expand the Main Folder for the DEMO Project and the user-defined *DEMO Sources* folder as indicated below:



The Source Metadata definitions are displayed.

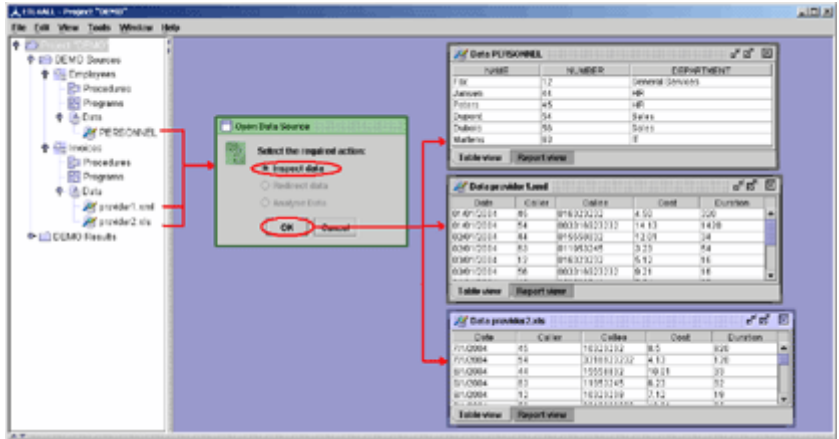
2. Double-click them to open the Metadata Editor Windows:



Additional information:

- For information on how to create the folder structure of your own Projects, refer to the ETL4ALL User Guide, page 63.
- For a general description on Metadata, refer to page 24.
- For information on declaring Relational Databases in ETL4ALL, refer to page 171.
- For information on using Database Tables to create Metadata, refer to page 71.
- For information on using XML Files to create Metadata, refer to page 69.
- For information on using Excel Files to create Metadata, refer to page 79.

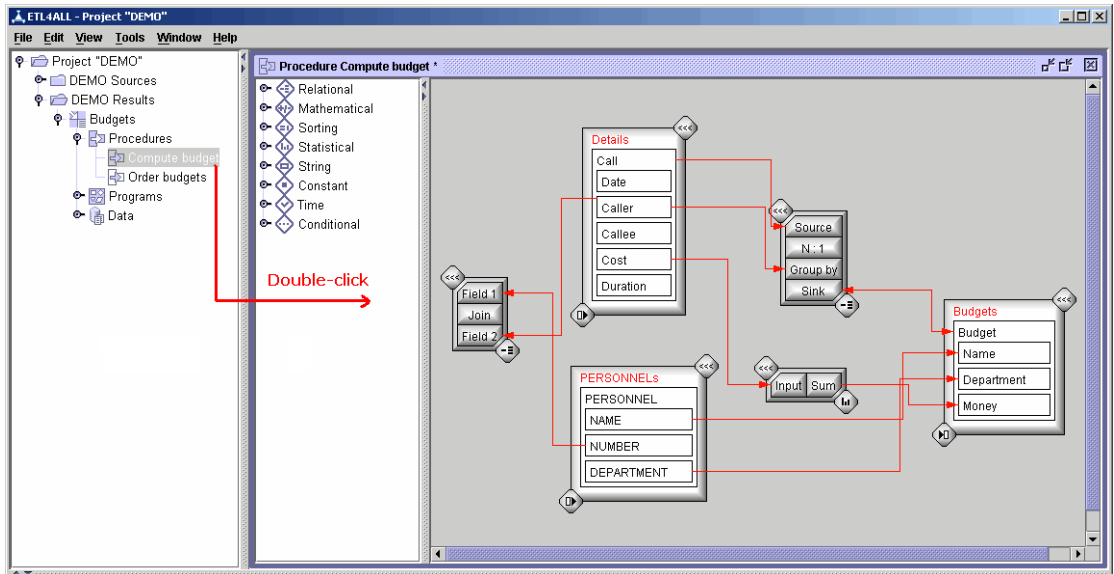
- Expand the Source Metadata definitions, so that the Data Sources are displayed. Double-click the Data Sources to display their content:



► To Display the Procedures

The Procedures describe how the Source Data must be transformed and combined in order to obtain the Target information. Procedures are always assigned to the Target Metadata Definition.

1. Expand the Main Folder for the DEMO Project and the user-defined *DEMO Results* folder.
2. Expand the user-defined *Budgets* Target Metadata, and double-click the *Compute budget* Procedure:



The Procedure mappings are displayed.

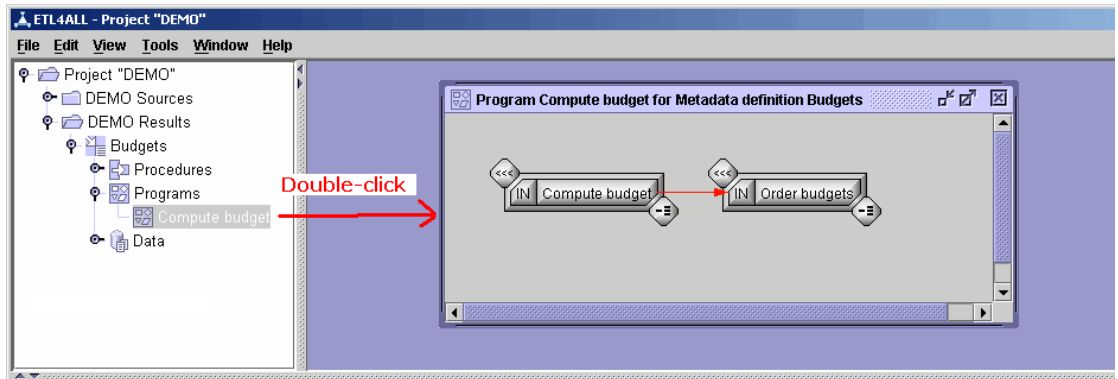
Additional information:

- For information on creating a Metadata definition manually, refer to page 64.
- For information on creating a Procedure, refer to page 107.
- For information the used functions, refer to the Function Reference Guide: *Join* (p. 190), *N : 1* (p. 185), *Sum* (p. 240) and *Direct Field Mapping* (p. 181).

► To display the Program

The Program describes in what sequence the Procedures must be run in order to obtain the Target information. Programs are always assigned to the Target Metadata Definition.

1. Expand the Main Folder for the DEMO Project and the user-defined *DEMO Results* folder.
2. Expand the user-defined *Budgets* Target Metadata, and double-click the *Compute budget* Procedure:



The Procedure sequence in the Program is displayed.

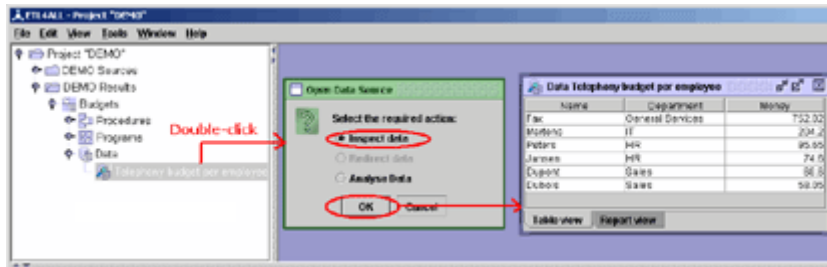
Additional information:

- For information on creating a Program, refer to page 110.

► To display the Results

Displaying the results implies inspecting the user-defined Virtual Data Source, assigned to the Target Metadata definition.

1. Expand the Main Folder for the DEMO Project and the user-defined *DEMO Results* folder.
2. Expand the user-defined *Budgets Target Metadata*, and double-click the *Telephony budget per employee* Virtual Data Source:



The results are displayed.

Additional information:

- For information on creating a Virtual Data Source, refer to page 110.
- For information on inspecting a Virtual Data Source, refer to page 124.

